

Digitalization of Stormwater Infrastructure

Rain-mX and LIQUA-Level Application
Below-Ground Dry Wells - INFILTRATION
Peoria, IL



P4 INFRASTRUCTURE

Christopher M. Foley, PhD, PE, FASCE
President

Joseph A. Diekfuss, PhD, PE
Vice President – Engineered Systems

Nicholas J. Hornyak, PhD, PE
Vice President – Sensor Technology

November 21, 2023

Introduction

Background
Customer Needs
P4 Solution

Community Concern:

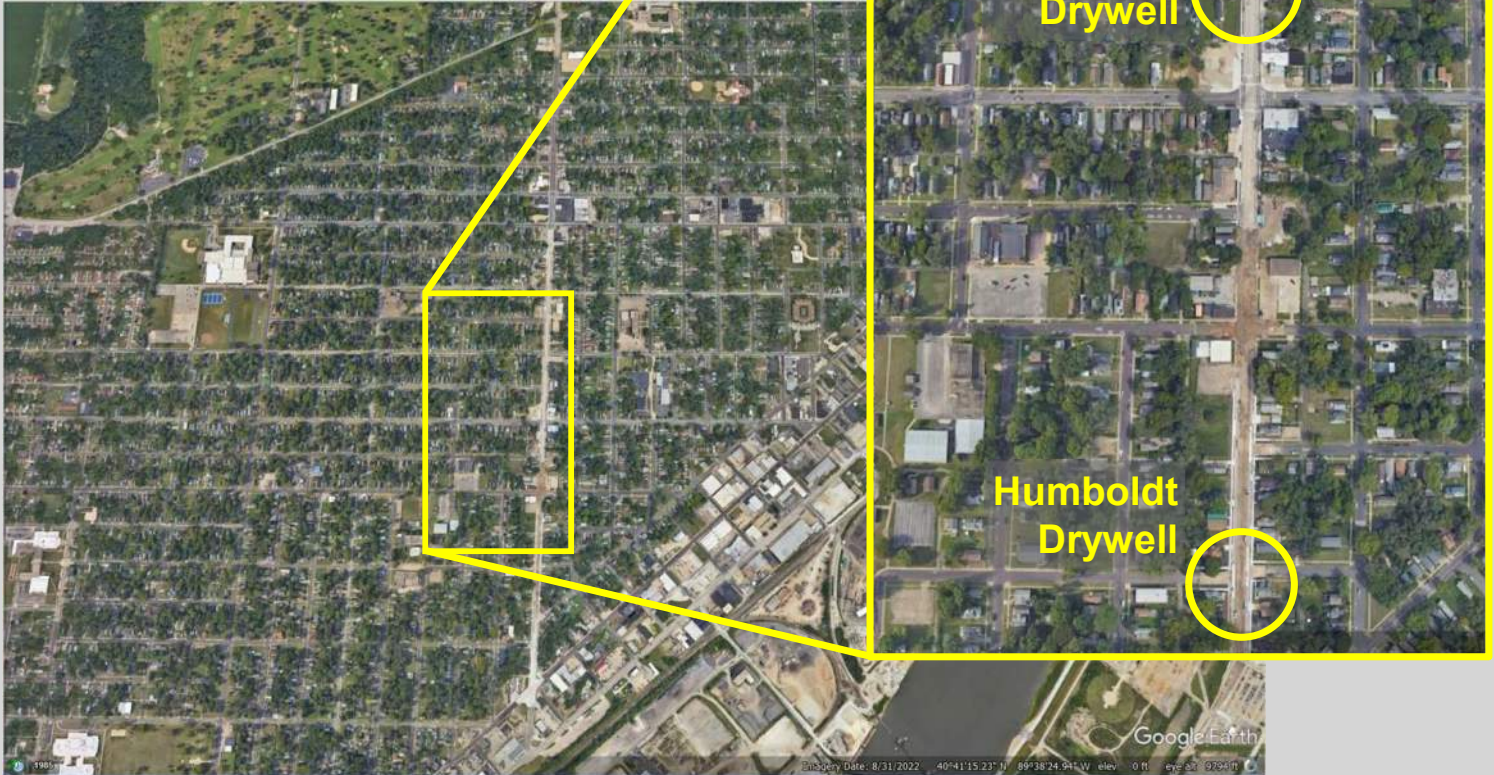
- Combined Sewer Overflows

Stormwater Infrastructure:

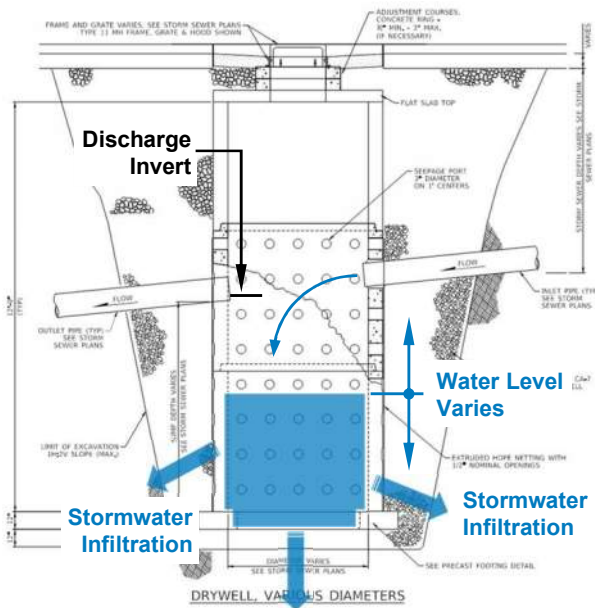
- Infiltration (Dry) Wells
- Located at Stormwater Inlets

Customer Needs:

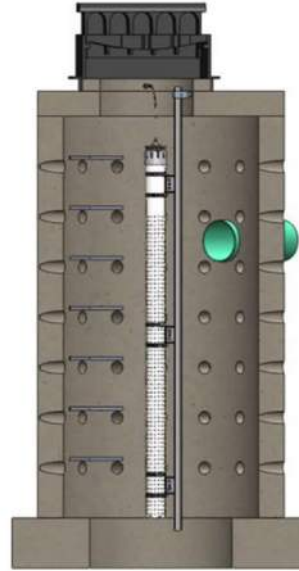
- Monitor & Document Performance
- Maintenance Evaluation



Infiltration Well



P4 Sensor Solution (easily removable)



Rain-mX



LIQUA-Level



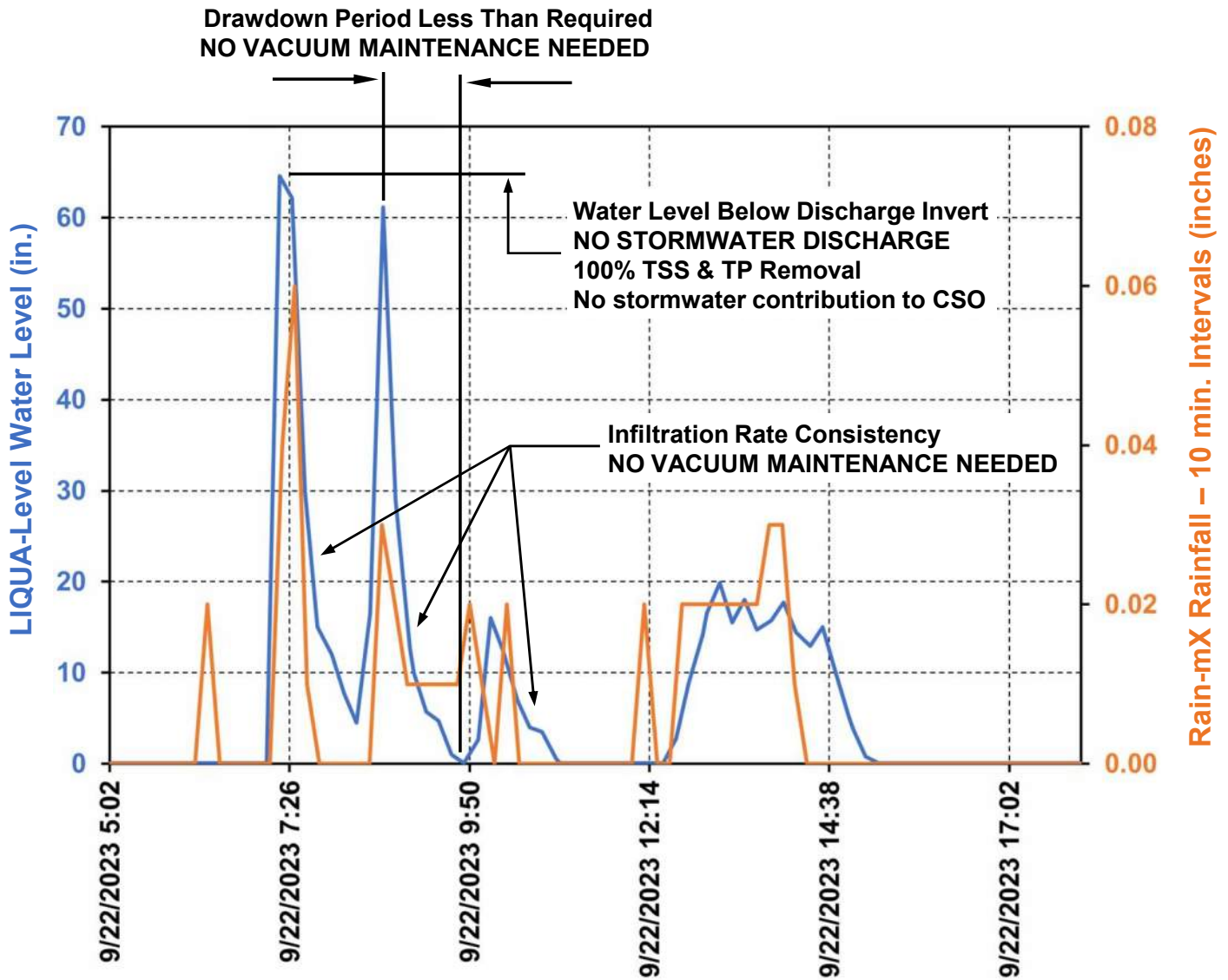
Measured Data

Operations & Maintenance

System Performance

Sensor Maintenance - Simple

Marquette Dry Well



Sensor Removal Process

Ten (10) Minutes to Remove



Sensor In Place



Sensor Re-Installed



Sensor Reinstallation

Ten (10) Minutes to Re-Install

The End

Let P4 show you how digitalization of stormwater infrastructure can change the game.



P4 INFRASTRUCTURE